



UN HAITI CHOLERA RESPONSE MULTI-PARTNER TRUST FUND

©UNICEF/Haiti 2025/Joseph- Kenson, 7, suffering from cholera and acute diarrhea after losing his mother to the same illness, is receiving treatment at Belle-Anse health center and is now recovering with support from MSPP and UNICEF.

2025 Annual Report



Office of the Resident Coordinator in Haiti and
UN Multi-Partner Trust Fund Office
<http://mptf.undp.org/cholera>

TABLE OF CONTENTS

1	FOREWORD
4	EXECUTIVE SUMMARY
6	CONTEXT AND SITUATION OVERVIEW
7	FUND OVERVIEW
8	TRACK 1A:PUBLIC HEALTH AND CHOLERA RESPONSE
8	RAPID RESPONSE AND WASH (UNICEF)
9	EPIDEMIOLOGICAL SURVEILLANCE, RESPONSE , AND HEALTH SYSTEMS (PAHO/WHO)
11	TRACK 2: COMMUNITY ASSISTANCE AND SUPPORT (UNDP)
13	HUMAN IMPACT: VOICES FROM THE GROUND
14	LOOKING AHEAD:CONSOLIDATING GAINS AND PREPARING FOR CLOSURE
16	2025 FINANCIAL REPORT
19	SOURCES AND USE OF FUNDS
20	PARTNER CONTRIBUTIONS
22	INTEREST EARNED
22	TRANSFER OF FUNDS
23	EXPENDITURE AND FINANCIAL DELIVERY RATES
25	COST RECOVERY
25	ACCOUNTABILITY AND TRANSPARENCY
26	ANNEX TO FINANCIAL REPORT



UNICEF/Haiti 2025, A child washes his hands at a handwashing station installed in the Diegue community.

Foreword



Dr. Nicole Boni Kouassi

Resident and Humanitarian
Coordinator in Haiti.

“Sustained investment in national systems delivers lasting results, even in the most challenging environments”

Since its establishment in 2016 under the United Nations New Approach to Cholera in Haiti, the UN Haiti Cholera Response Multi-Partner Trust Fund (MPTF) has supported national efforts to eliminate cholera transmission, strengthen public health and water systems, and assist communities most affected by the epidemic. Through close collaboration between the Government of Haiti, communities, the United Nations, international partners, and donors, Haiti has made significant progress in reducing cholera transmission and strengthening national response capacities.

The year 2025 tested these gains amid escalating insecurity, large-scale displacement, and the devastating impact of Hurricane Melissa. Despite these challenges, the national response architecture developed over recent years demonstrated strong resilience and effectiveness. Rapid-response mechanisms embedded within the Ministry of Public Health and Population (MSPP), strengthened epidemiological surveillance systems, and local water and sanitation structures enabled authorities and partners to contain outbreaks and maintain the cholera Case Fatality Rate at 1.3%. Suspected cholera cases declined by 93%, from more than 54,000 cases during the 2023 resurgence to 3,664 cases in 2025.

At the same time, Track 2 investments in community infrastructure continued to strengthen local resilience, livelihoods, and community ownership through locally managed water systems, markets, and sanitation initiatives.

These results would not have been possible without the solidarity and sustained support of the Fund’s 45 contributors. Their commitment helped Haiti progressively...

...build the institutional and operational capacities required for a nationally led response. As the Fund enters its final phase in 2026, the focus now shifts toward consolidating these gains and ensuring a sustainable transition toward full national ownership. In partnership with the Government of Haiti, the United Nations Country Team will continue supporting efforts throughout 2026 to ensure that national institutions possess the systems, capacities, and operational environment necessary to sustain progress beyond the closure of the Fund on 31 December 2026.

The progress achieved over the past years demonstrates that sustained investment in national systems, local communities, and institutional partnerships can deliver lasting results, even in the most challenging environments. Haiti enters this transition phase with stronger capacities, greater resilience, and a solid foundation upon which national institutions can continue building toward the long-term elimination of cholera and the protection of public health for all Haitians.

Dr. Nicole Boni Kouassi

Resident and Humanitarian Coordinator in Haiti.



PAHU/Haiti/2025 Community meeting in Dessalines as part of cholera prevention efforts



©UNICEF/Haiti 2025/Honore , UNICEF has installed handwashing stations in institutions to help children prevent cholera.

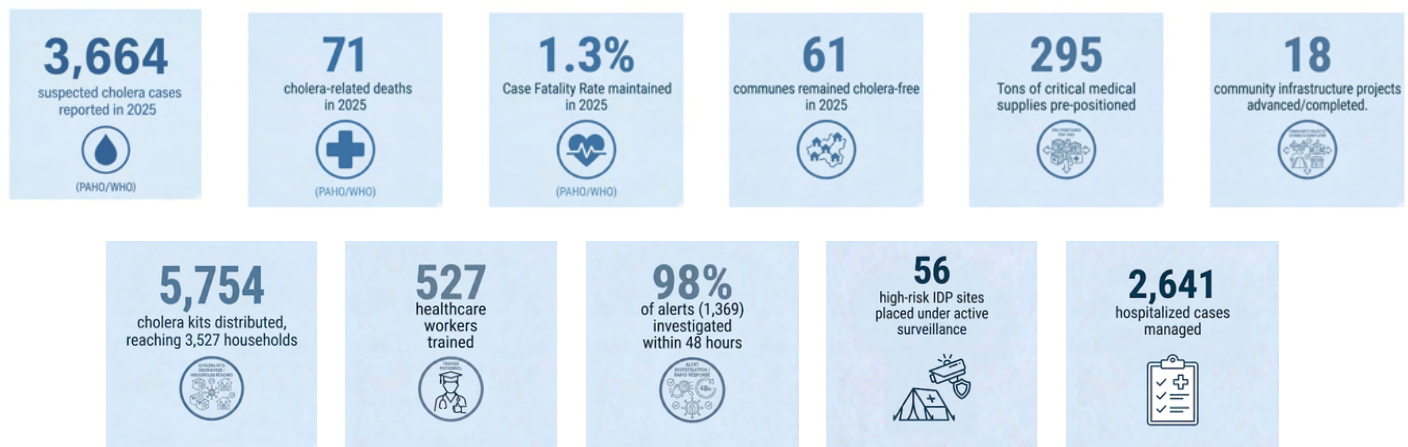
Executive Summary

The year 2025 marked a definitive operational shift for the United Nations Haiti Cholera Response Multi-Partner Trust Fund (MPTF). Entering its penultimate year, the MPTF pivoted from its historical role as a flexible emergency financing instrument toward institutional capacity building and transition readiness, deploying its last unprogrammed resources to consolidate national systems.

During 2025, the MPTF Advisory Committee allocated these critical funds to UNICEF, PAHO/WHO, for work on Track 1, and UNDP for the implementation of Track 2 material assistance. These allocations were strategically designed to be implemented through 2026, ensuring a responsible and structured consolidation of the mechanism. Throughout the year, Track 1A partners focused on maintaining acute response capabilities while actively embedding these systems—such as localized surveillance and rapid response teams—into national structures. Simultaneously, Track 2 operations accelerated the delivery of community-led infrastructure projects, fulfilling the UN’s commitment to provide material assistance and localized agency to the most affected communities.

This 2025 Annual Report outlines the results of these strategic investments and sets the stage for the crucial consolidation work that will define 2026, leading up to the Fund's ultimate closure.

2025 in Numbers





PAHO/Haiti/2025 Local health authorities, supported by PAHO, collect a water sample from a drinking well for laboratory testing in Pétiyon-Ville, Haiti

Context and Situation Overview

In 2025, Haiti continued to navigate a highly complex operating environment characterized by interlocking security and humanitarian challenges. The ongoing volatility restricted humanitarian access and severely strained national infrastructure, exacerbated by extreme weather events such as Hurricane Melissa in October 2025, which destroyed or damaged nearly 842,400 homes and critical infrastructure (OCHA, 2026).

These compounding crises triggered a shift in mass displacement, with 79% of new displacements occurring outside Port-au-Prince (IOM, 2025), heavily impacting departments such as Centre and Artibonite. This geographic shift placed extreme pressure on provincial systems at a time when only 26% of 268 inpatient health facilities nationwide were fully functional (WHO, 2026).

Despite this near-collapse of the health system and WASH infrastructure, the rapid deployment of national and UN teams successfully contained cholera transmission spikes. National epidemiological data reflects a dramatic stabilization: total suspected cases* plummeted by 93%, dropping from over 54,000 at the height of the 2023 resurgence to 3,664 in 2025 (UNICEF, 2026). Similarly, the national incidence rate was driven down to a mere 0.2 per 10,000 inhabitants. Throughout the second half of the year, active surveillance networks monitored 1,571 suspected cases, heavily focused on 56 high-risk IDP sites (PAHO, 2026). Even though newly suspected cases are still reported in IDP sites and communities, immediate, localized interventions and improved clinical management allowed the national response to maintain the localized Case Fatality Rate (CFR) at 1.3% (PAHO, 2025)—contributing to a 90% year-over-year reduction in total cholera-related deaths nationwide.

This measurable success stands as a testament to the MPTF's long-term investments; the institutional capacity demonstrated by the government during this recent response was markedly stronger than in previous years, proving that sustained, targeted capacity-building has yielded a more resilient national health system. This challenging context reinforces the strategic imperative of the MPTF's 2025 allocations: to further fortify these national emergency response systems and community resilience so they can function independently in the years to come.

* Suspected cases refer to patients presenting with cholera-like symptoms in settings where lab confirmation is limited



PAHO/Haiti/2025 A woman receives treatment for dehydration at the Thomassin Health Center in Pétion-Ville, Haiti.

Fund Overview

Since its inception, the MPTF has served as a strategic financing mechanism for the UN's "New Approach," bridging the gap between life-saving epidemiological interventions and meaningful community assistance. Backed by a historic coalition of 45 different contributors—among the largest donor bases for a single MPTF—the Fund has served as a powerful symbol of international solidarity with the Haitian people.

In 2025, the Advisory Committee took the strategic decision to fully allocate the remaining unprogrammed funds in the mechanism—totaling \$1.35 million—to ensure readiness for 2026. These grants were strictly bound by three core principles:

1. **Maximum Impact:** Addressing the most acute remaining vulnerabilities in hot-spot departments.
2. **National Ownership:** Directing funds toward activities that build the enduring capacity of the Ministry of Public Health and Population (MSPP) and the national water agency (DINEPA).
3. **Consolidation and Closure:** Ensuring all programmatic activities are fully resourced for completion and integration into national frameworks prior to the Fund's closure at the end of 2026.

Track 1A: Public Health and Cholera Response

Reducing transmission, improving access to care, and institutionalizing surveillance.

Rapid Response and WASH (UNICEF)

Between October and December 2025, UNICEF's interventions focused on sustaining the Case-Area Targeted Intervention (CATI) mechanism—the backbone of Haiti's localized cholera response—while actively consolidating its management within national authorities.

- **Strategic Targets & Rapid Containment:** In response to localized transmission, field teams demonstrated strong responsiveness, with 339 out of 343 suspected cholera cases triggering a response within 48 hours (98.8%). During the reporting period, MPTF funding enabled UNICEF and its partners to distribute 5,754 cholera kits, reaching 3,527 households (approximately 21,650 people). To bolster the clinical capacity to manage these cases, 42 health professionals—including doctors, nurses, and nursing auxiliaries—were deployed across seven strategic health facilities in the Ouest, Artibonite, and Nord departments.
- **Community-Level Prevention:** Recognizing that community engagement is critical to halting transmission, 45 community health workers were trained and deployed in priority urban neighborhoods such as Port-au-Prince, Cité Soleil, and Carrefour to reinforce community awareness, surveillance, and referral pathways. Furthermore, 428 mass awareness sessions were conducted in schools, churches/lakou, public squares, and markets, successfully reaching 33,919 people.
- **Consolidation & Institutional Readiness:** To ensure sustainability beyond 2026, UNICEF prioritized the integration of the CATI mechanism into the decentralized structures of the national water and sanitation agency (DINEPA) and the Ministry of Public Health and Population (MSPP). This transition strategy also incorporates the establishment of an Accountability to Affected Populations (AAP) mechanism, systematically collecting community feedback to ensure national interventions remain responsive to local needs long after the MPTF closes.

Moving into 2026, UNICEF continues to sustain the CATI mechanism and scale up localized community engagement interventions to immediately cut transmission lines as new alerts arise.



PAHO/Haiti/2025 Local health authorities, supported by PAHO, test a water sample from a drinking well for laboratory testing in Pétion-Ville, Haiti.

Epidemiological Surveillance, Response, and Health Systems (PAHO/WHO)

In 2025, PAHO/WHO strategically used its MPTF allocation to reinforce Haiti's integrated cholera response, strengthening early detection, rapid outbreak control, clinical case management, community-based prevention, and institutional readiness, while supporting the progressive transition of core functions to the Ministry of Public Health and Population (MSPP).

- **Integrated Surveillance & Rapid Containment:** PAHO/WHO supported a highly responsive early warning and response system, with 96% of cholera alerts (355/368) investigated within 48 hours, exceeding performance targets. This capacity enabled early detection and containment of localized outbreaks, notably in Pétion Ville (Ouest Department) and Belle Anse (Sud Est Department). In complex urban settings, PAHO/WHO supported the implementation of the CATI (Case Area Targeted Interventions) strategy, combining epidemiological investigation, rapid risk analysis, targeted community action, and coordination with WASH partners. CATI proved particularly effective in Pétion Ville, where high population density, delayed access to care, and structural WASH gaps increased transmission risk.

- **Laboratory Capacity & Community-Based WASH:** Surveillance coverage was expanded to 56 internally displaced persons (IDP) sites, strengthening early warning in highly vulnerable environments and enabling faster response. Laboratory capacity was reinforced through the deployment of 22 “Labo moto” nurses, who conducted extensive field visits across departments and IDP sites, ensuring secure sample transport, rapid confirmation, and improved reliability of surveillance data. Surveillance activities were systematically linked to community-based WASH and IPC interventions. These included support to hygiene committees, deployment and training of hygiene officers, water quality monitoring with corrective actions, and joint investigations with departmental authorities. These measures strengthened protection around detected cases and complemented CATI interventions in outbreak settings.
- **Clinical Capacity & Patient Care:** PAHO/WHO strengthened cholera case management and IPC across 175 health facilities (CTDAs and PROs) through continuous supply of essential medicines and IPC materials, complemented by on-site formative supervision. These interventions supported safe and timely care during epidemic peaks. A total of 527 healthcare workers were trained through targeted sessions and bedside mentoring on cholera case management, IPC, data management, and referral pathways. This integrated approach improved adherence to national protocols, reduced operational gaps, and helped stabilize the case fatality rate at approximately 1.30%, despite major access, security, and referral constraints. Operational readiness was sustained through the delivery and pre-positioning of 295 tons of critical medical and investigation supplies, including rehydration fluids, antibiotics, IPC kits, and epidemiological materials, significantly reducing response delays and ensuring continuity of patient care and field investigations.
- **Transition & Institutional Readiness:** To promote national ownership and sustainability, PAHO/WHO strengthened strategic capacity within the Directorate of Epidemiology, Laboratories and Research (DELR) and the National Public Health Laboratory (LNSP). Support included validation of data for over 1,000 suspected cases in DHIS2, continuous technical assistance to departmental teams, and regular situation analyses and coordination platforms to support evidence-based decision-making.

Through the end of 2026, PAHO will maintain its critical support for decentralized epidemiological surveillance and ensure priority CTDAs remain equipped to manage sporadic outbreaks.

Track 2: Community Assistance and Support (UNDP)

Delivering material assistance and dignity to the communities most affected by cholera _

Through UNDP, Track 2 represents the realization of the UN's commitment to stand with the Haitian people. In 2025, Track 2 operations focused on the advancement and consolidation of community-led infrastructure and livelihood projects across three strategic communes: Fort-Liberté, Belladère, and Saint-Michel de l'Attalaye. Driven by a participatory approach, the program supported 22 community-identified projects, of which 5 are completed, 10 are ongoing, 2 are in the startup phase, and 5 are suspended.

Fort-Liberté – Economic Recovery and Food Security: In Fort-Liberté, UNDP worked with the community to implement eight projects with a strong focus on livestock, agriculture, and economic recovery. A major achievement was the establishment of an IT room designed to provide learning tools for approximately 2,500 students. The program also distributed goats and cattle, establishing a rolling solidarity system where the offspring of the initial livestock were redistributed to new vulnerable households, including internally displaced persons. Furthermore, the installation of a community rice mill in Savane Visite now...



UNDP/Haiti/2025 Restoring livelihoods and economic resilience: An MPTF-funded animal distribution in Fort-Liberté, supported by UNDP as part of Track 2 material assistance.

- ...processes around 80 bags of rice per day during harvest season, serving five different communes in the North-East department and boosting the local rice value chain. Agricultural input shops were also opened to provide local farmers with affordable access to certified seeds and fertilizers.
- **Saint-Michel de l'Attalaye – WASH and Market Infrastructure:** Following 55 UNDP-led community consultations, nine priority projects were selected out of 101 proposed ideas. Recognizing the region's strong agricultural and commercial footprint, significant investments were directed toward constructing and modernizing multiple community markets, including those in Pable, Paul, and Lermithe. These modern markets vastly improve commercial hygiene by eliminating the need to sell products on the bare ground, which directly reduces sanitary and cholera-related risks. Additional critical projects in this commune include the rehabilitation of the Platana drinking water supply system and the construction of a security fence for the Camathe National School.
- **Belladère – Security Challenges and Adaptability:** Five priority projects were identified by the community in Belladère, including a poultry farm, a sewing center, and a drinking water supply system in Las Aguas. Unfortunately, the severe deterioration of the security situation and the presence of armed gangs on the national roads in Mirebalais and Lascahobas forced the suspension of operations and the evacuation of UNDP personnel in March 2025. This underscores the highly complex and volatile operating environment the UN navigates to deliver assistance.
- **Community Ownership & Institutional Readiness:** The ultimate success of Track 2 relies entirely on local ownership. Supported by UNDP, community platforms have emerged as highly credible actors in local governance and social cohesion, playing a foundational role in the planning, evaluation, and management of these projects. This participatory governance structure ensures that the communities themselves possess the technical and administrative skills required to independently manage and maintain these critical infrastructures well beyond the Fund's closure.

The final phases of these community-led infrastructure and economic resilience projects will be fully completed over the course of 2026.

Human Impact: Voices from the Ground

Building Dignity, Solidarity, and Local Economies

The true impact of Track 2 lies not just in the infrastructure built, but in the community-led and UNDP supported process that brought it to life. For decades, international interventions in Haiti have frequently relied on top-down models. Through the MPTF, the UN prioritized localized agency, empowering community platforms to design and execute their own material assistance projects.

For Saint-Louis Joseph, a community platform member in Fort-Liberté, this approach represented a fundamental shift. "Since my childhood, I saw international organizations execute projects in the community without leaving any trace... because they were planned without our active participation," he notes. The Track 2 methodology changed this paradigm, allowing communities to directly address the structural deficits they identified themselves.

The tangible outcomes of this localized ownership extend far beyond the physical assets. Phénise Dezalant, a member of a local management platform, highlights how the construction of community markets is transforming the region's socio-economic fabric, particularly for women who play a central role in agriculture and commerce.

"This market represents a platform of recognition and empowerment, a space where women can develop their activities, access new clients, and strengthen their economic leadership," she explains. "Beyond the economic gains, this market embodies a collective hope. The inhabitants see it as a tangible sign of progress, restored dignity, and solidarity."



UNDP/Haiti/2025 UNDP-led community consultations led to the construction of a community market place in Fort-Liberté

Looking Ahead: Consolidating Gains and Preparing for Closure

As the MPTF moves into 2026, the operational focus shifts entirely to execution, consolidation, and readiness. In this context, consolidation refers to the definitive shift from a flexible emergency financing model toward the permanent integration of these capabilities into Haiti's national institutional framework with ongoing support from the UN Country Team. The allocations made in 2025 represent the critical investments needed to bring the Fund's specific interventions to a successful close.

It is vital, however, to accurately frame the MPTF's role within the broader humanitarian and development ecosystem. The MPTF was never the sole financier of the cholera response; rather, it served as a catalytic, gap-filling instrument, stepping in during critical moments to complement other funding streams and address the most acute vulnerabilities. Throughout its lifecycle, this work has always been executed in deep partnership with the Government of Haiti and UN Funds and Programmes, with ultimate ownership securely resting with national authorities.

Therefore, the closure of this specific pooled funding instrument on December 31, 2026, does not represent a "handover" of responsibilities, but rather the successful conclusion of a strategic financial mechanism that has successfully fulfilled its time-bound mandate. The UN Country Team (UNCT)—including UNICEF, PAHO/WHO, and UNDP—will continue its steadfast work squarely alongside the Ministry of Public Health and Population (MSPP), the national water agency (DINEPA), and other parts of the Haitian Government. The UN remains fully committed to providing the essential technical, logistical, and operational support required to backstop these national systems.

Consequently, the conclusion of the MPTF does not signal an end to resource requirements. To the contrary, sustained, direct funding to these implementing partners—from both existing and new donors—remains absolutely critical to safeguarding the public health and WASH infrastructure of the country.

As affirmed by the Executive Office of the Secretary-General, Haiti is not a forgotten crisis; the cholera file and the broader Haitian context remain a daily priority at the highest levels of the Organization.

The upcoming year will be dedicated to completing the final MPTF transitional projects in localized surveillance, WASH, and community infrastructure. While Haitian authorities officially lead the response, UN agencies continue to provide the critical operational and technical engine behind these national efforts. Sustained donor solidarity will remain essential to backstop this government-led approach and ensure the historic gains fortified under this mechanism are permanently secured.



PAHO/Haiti/2025 Receipt of supplies by the Departmental Pharmacist and the Assistant Epidemiologist in the Nippes Department, delivered by PAHO as part of the cholera response



CONSOLIDATED ANNUAL FINANCIAL REPORT of the Administrative Agent

Haiti Cholera Response Multi-Partner Trust Fund

for the period 14 October 2016 to 31 December 2025

UN Multi-Partner Trust Fund Office
United Nations Development Programme
GATEWAY: <https://mptf.undp.org>

May 2026



United Nations
MPTF Office



United Nations
MPTF Office

Haiti Cholera Response Multi-Partner Trust Fund
CONSOLIDATED ANNUAL FINANCIAL REPORT 2025

DEFINITIONS

Allocation/Total Approved Budget

Amount approved by the Advisory Committee for a project/programme. The total approved budget represents the cumulative amount of allocations approved by the Advisory Committee..

Approved Project/Programme

A project/programme including budget, etc., that is approved by the Advisory Committee for funds' allocation purposes.

Contributor Commitment

Amount(s) committed by a contributor to a Fund in a signed donor agreement with the UNDP Multi-Partner Trust Fund Office (MPTF Office), in its capacity as the Administrative Agent. A commitment may be paid or pending payment.

Contributor Deposit

Cash deposit received by the MPTF Office for the Fund from a contributor in accordance with a signed donor agreement.

Delivery Rate

The percentage of funds that have been utilized, calculated by comparing expenditures reported by a Participating Organization or Non-UN Organization against the 'net funded amount'. This does not include expense commitments by Participating Organizations.

Contribution Agreement

Standard Administrative Arrangement (SAA) and/or European Commission contribution agreement between contributor/donor and MPTF Office.

Net Funded Amount

Amount transferred to a Participating Organization less any refunds transferred back to the MPTF Office by a Participating Organization.

Participating Organization

A UN Organization or other inter-governmental Organization that is a partner in a Fund, as represented by signing the applicable legal agreement with the MPTF Office for a particular Fund.

Project Expenditure

The sum of expenses reported by all Participating Organizations for a Fund reported to the AA.

Project Financial Closure

A project or programme is considered financially closed when all financial obligations of an operationally completed project or programme have been settled, and no further financial charges may be incurred. MPTF Office will report a project financially closed once the financial report(s) has been received and any balance of funds refunded.

Project Operational Closure

A project or programme is deemed operationally closed once all activities funded for Participating Organization(s) have been concluded, and the Advisory Committee has approved the final narrative report.

US Dollar Amount

The financial data in the report is recorded in US Dollars.

Transferred Funds

Funds transferred to Participating Organizations by the Administrative Agent in accordance with the Advisory Committee's request.

INTRODUCTION

This Consolidated Annual Financial Report of the **Haiti Cholera Response Multi-Partner Trust Fund** is prepared by the United Nations Development Programme (UNDP) Multi-Partner Trust Fund Office (MPTF Office) in fulfillment of its obligations as Administrative Agent, as per the Terms of Reference (TOR), the Memorandum of Understanding (MOU) signed between the UNDP MPTF Office and the Participating Organizations, and the donor agreement signed with contributors/donors.

The MPTF Office, as Administrative Agent, is responsible for concluding an MOU with Participating Organizations and donor agreements with contributors/donors. It receives, administers and manages contributions,

and disburses these funds to the Participating Organizations. The Administrative Agent prepares and submits annual consolidated financial reports, as well as regular financial statements, for transmission to stakeholders.

This consolidated financial report covers the period 14 October 2016 to 31 December 2025 and provides financial data on progress made in the implementation of projects of the **Haiti Cholera Response Multi-Partner Trust Fund**. It is posted on the MPTF Office GATEWAY (<https://mptf.undp.org/fund/clh00>).



United Nations
MPTF Office

Haiti Cholera Response Multi-Partner Trust Fund
CONSOLIDATED ANNUAL FINANCIAL REPORT 2025

2025 FINANCIAL PERFORMANCE

This chapter presents financial data and analysis of the **Haiti Cholera Response Multi-Partner Trust Fund** using the pass-through funding modality as of 31 December **2025**. Financial information for this Fund is also available on the MPTF Office GATEWAY, at the following address: <https://mptf.undp.org/fund/clh00>.

1. SOURCES AND USES OF FUNDS

As of 31 December **2025**, **45** contributors deposited US\$ **21,888,101** and US\$ **443,153** was earned in interest.

The cumulative source of funds was US\$ **22,353,209**.

Of this amount, US\$ **22,133,246** has been net funded to **5** Participating Organizations, of which US\$ **19,298,996** has been reported as expenditure. The Administrative Agent fee has been charged at the approved rate of 1% on deposits and amounts to US\$ **218,881**. Table 1 provides an overview of the overall sources, uses, and balance of the **Haiti Cholera Response Multi-Partner Trust Fund** as of 31 December 2025.

Table 1 Financial Overview, as of 31 December 2025 (in US Dollars)

	Prior Years up to 31 Dec 2024	Financial Year Jan-Dec 2025	Total
Sources of Funds			
Contributions from donors	21,888,101	-	21,888,101
Sub-total Contributions	21,888,101	-	21,888,101
Fund Interest and Investment Income Earned	443,153	-	443,153
Other Income	21,956	-	21,956
Total: Sources of Funds	22,353,209	-	22,353,209
Use of Funds			
Transfers to Participating Organizations	20,906,029	1,355,715	22,261,744
Sub-Total Transfers	20,906,029	1,355,715	22,261,744
Refunds received from Participating Organizations	(128,498)	-	(128,498)
Sub-Total Refunds	(128,498)	-	(128,498)
Administrative Agent Fees	218,881	-	218,881
Bank Charges	1,081	-	1,081
Total: Uses of Funds	20,997,493	1,355,715	22,353,208
Change in Fund cash balance with Administrative Agent	1,355,716	(1,355,715)	1
Opening Fund balance (1 January)	1,241,339	1,355,716	-
Closing Fund balance (31 December)	1,355,716	1	1
Net Funded Amount (Includes Direct Cost)	20,777,531	1,355,715	22,133,246
Participating Organizations Expenditure (Includes Direct Cost)	17,783,257	1,515,740	19,298,996
Balance of Funds with Participating Organizations	2,994,275	(160,025)	2,834,250



2. PARTNER CONTRIBUTIONS

Table 2 provides information on cumulative contributions received from all contributors to this fund as of 31 December 2025.

The **Haiti Cholera Response Multi-Partner Trust Fund** is currently being funded by **45** contributors, as listed in the table below.

The table includes financial commitments made by the contributors through signed Standard Administrative Agreements with an anticipated deposit date as per the schedule of payments by 31 December 2025 and deposits received by the same date. It does not include commitments that were made to the fund beyond 2025.

Table 2. Contributions, as of 31 December 2025 (in US Dollars)

Contributors	Total Commitments	Total Deposits
Government of Algeria	30,140	30,140
Government of Argentina	10,000	10,000
Government of Bahamas	5,115	5,115
Government of Belgium	349,555	349,555
Government of Belize	79	79
Government of Canada	1,153,728	1,153,728
Government of Chile	250,000	250,000
Government of Côte d'Ivoire	711	711
Government of Cuba	5,134	5,134
Government of Cyprus	16,984	16,984
Government of France	638,100	638,100
Government of Grenada	79	79
Government of Guyana	1,160	1,160
Government of India	158,220	158,220
Government of Ireland	132,318	132,318
Government of Israel	169,840	169,840
Government of Italy	100,000	100,000
Government of Jamaica	711	711
Government of Japan	2,010,900	2,010,900
Government of Liechtenstein	77,780	77,780
Government of Luxembourg	25,279	25,279
Government of Mexico	113,358	113,358
Government of Montenegro	10,000	10,000
Government of Myanmar	395	395
Government of Nepal	5,237	5,237
Government of Netherlands	585,356	585,356
Government of Norway	762,791	762,791
Government of Palau	79	79
Government of Paraguay	1,106	1,106



United Nations
MPTF Office

Haiti Cholera Response Multi-Partner Trust Fund
CONSOLIDATED ANNUAL FINANCIAL REPORT 2025

Government of Philippines	52,500	52,500
Government of Portugal	154,830	154,830
Government of Republic of Korea	2,105,358	2,105,358
Government of Romania	48,084	48,084
Government of Senegal	198	198
Government of Slovakia	37,917	37,917
Government of Sri Lanka	7,449	7,449
Government of Sudan	395	395
Government of the United Kingdom (other)	623,450	623,450
Government of The United States	10,000,000	10,000,000
Government of Ukraine	8,137	8,137
Government of Uruguay	7,801	7,801
Government of Venezuela (Bolivarian Republic of)	45,106	45,106
Government Offices of Sweden	412,720	412,720
Open Society Foundations	270,000	270,000
Qatar Fund for Development	1,500,000	1,500,000
Grand Total	21,888,101	21,888,101



United Nations
MPTF Office

Haiti Cholera Response Multi-Partner Trust Fund
CONSOLIDATED ANNUAL FINANCIAL REPORT 2025

3. INTEREST EARNED

Interest income is earned in two ways: 1) on the balance of funds held by the Administrative Agent (Fund earned interest), and 2) on the balance of funds held by the Participating Organizations (Agency earned interest) where their Financial Regulations and Rules allow return of interest to the AA.

As of 31 December **2025**, Fund earned interest amounts to US\$ **443,153**.

No interest was received from Participating Organizations. Details are provided in the table below.

Table 3. Sources of Interest and Investment Income, as of 31 December 2025 (in US Dollars)

Interest Earned	Prior Years up to 31-Dec-2024	Financial Year Jan-Dec-2025	Total
Administrative Agent			
Fund Interest and Investment Income Earned	443,153	-	443,153
Total: Fund Interest Earned	443,153	-	443,153
Participating Organization			
Total: Agency Interest Earned	-	-	-
Grand Total	443,153	-	443,153

4. TRANSFER OF FUNDS

Allocations to Participating Organizations are approved by the Advisory Committee and disbursed by the Administrative Agent. As of 31 December **2025**, the AA has transferred US\$ **22,261,744** to **5** Participating Organizations (see list below).

Table 4 provides additional information on the refunds received by the MPTF Office, and the net funded amount for each of the Participating Organizations.

Table 4. Transfer, Refund, and Net Funded Amount to Participating Organization (in US Dollars)

Participating Organization	Prior Years up to 31-Dec-2024			Financial Year Jan-Dec-2025			Total		
	Transfers	Refunds	Net Funded	Transfers	Refunds	Net Funded	Transfers	Refunds	Net Funded
PAHO/WHO	4,000,000	(65,115)	3,934,885	550,000	-	550,000	4,550,000	(65,115)	4,484,885
UNDP	7,227,479	-	7,227,479	255,715	-	255,715	7,483,194	-	7,483,194
UNDPO	843,730	-	843,730	-	-	-	843,730	-	843,730
UNICEF	4,000,791	(63,383)	3,937,408	550,000	-	550,000	4,550,791	(63,383)	4,487,408
UNOPS	4,834,030	-	4,834,030	-	-	-	4,834,030	-	4,834,030
Grand Total	20,906,029	(128,498)	20,777,531	1,355,715	-	1,355,715	22,261,744	(128,498)	22,133,246



5. EXPENDITURE AND FINANCIAL DELIVERY RATES

All expenditures reported are submitted as certified financial information by the Headquarters of the Participating Organizations. These were consolidated by the MPTF Office.

Joint Programme/Project expenditures are incurred and monitored by each Participating Organization, and are reported to the Administrative Agent as per the agreed upon categories for inter-agency harmonized reporting. The expenditures are reported via the MPTF Office's online expenditure reporting tool. The 2025 expenditure data has been posted on the MPTF Office GATEWAY at <https://mptf.undp.org/fund/clh00>.

5.1 EXPENDITURE REPORTED BY PARTICIPATING ORGANIZATION

In 2025, US\$ 1,355,715 was net funded to Participating Organizations, and US\$ 1,515,740 was reported in expenditure.

As shown in the table below, the cumulative net funded amount is US\$ 22,133,246 and cumulative expenditures reported by the Participating Organizations amount to US\$ 19,298,996. This equates to an overall Fund expenditure delivery rate of 87.19 percent.

Table 5.1 Net Funded Amount and Reported Expenditures by Participating Organization, as of 31 December 2025 (in US Dollars)

Participating Organization	Approved Amount	Net Funded Amount	Expenditure			Delivery Rate %
			Prior Years up to 31-Dec-2024	Financial Year Jan-Dec-2025	Cumulative	
PAHO/WHO	4,550,000	4,484,885	3,934,885	-	3,934,885	87.74
UNDP	7,483,194	7,483,194	4,393,291	1,446,106	5,839,398	78.03
UNDPO	843,730	843,730	852,430	-	852,430	101.03
UNICEF	4,550,791	4,487,408	3,900,704	6,769	3,907,473	87.08
UNOPS	4,834,030	4,834,030	4,701,947	62,864	4,764,811	98.57
Grand Total	22,261,744	22,133,246	17,783,257	1,515,740	19,298,996	87.19



5.2. Expenditures Reported by Category

Project expenditures are incurred and monitored by each Participating Organization and are reported as per the agreed categories for inter-agency harmonized reporting.

Table 5.2. Expenditure by UNSDG Budget Category, as of 31 December 2025 (in US Dollars)

Category	Expenditures			Percentage of Total Programme Cost
	Prior Years up to 31-Dec-2024	Financial Year Jan-Dec-2025	Total	
Staff & Personnel Cost	2,989,946	193,606	3,183,552	17.65
Supplies, commodities and materials	916,158	10,939	927,097	5.14
Equipment, vehicles, furniture and depreciation	1,398,148	169,399	1,567,547	8.69
Contractual Services Expenses	5,565,879	703,467	6,269,345	34.75
Travel	814,456	76,341	890,797	4.94
Transfers and Grants	3,602,571	135,826	3,738,397	20.72
General Operating	1,334,675	127,426	1,462,101	8.11
Programme Costs Total	16,621,833	1,417,004	18,038,837	100.00
¹ Indirect Support Costs Total	1,161,424	98,736	1,260,160	6.99
Grand Total	17,783,257	1,515,740	19,298,996	-

¹ Indirect Support Costs charged by Participating Organization, based on their financial regulations, can be deducted upfront or at a later stage during implementation. The percentage may therefore appear to exceed the 7% agreed upon for on-going projects. Once projects is financially closed, this number is not to exceed 7%.



6. COST RECOVERY

Cost recovery policies for the Fund are guided by the applicable provisions of the Terms of Reference, the MOU concluded between the Administrative Agent and Participating Organizations, and the SAAs concluded between the Administrative Agent and Contributors, based on rates approved by UNDG.

The policies in place, as of 31 December 2025, were as follows:

- **The Administrative Agent (AA) fee:** 1% is charged at the time of the contributor deposit and covers services provided on that contribution for the entire duration of the Fund. Cumulatively, as of 31 December 2025, US\$ **218,881** has been charged in AA fees.
- **Indirect Costs of Participating Organizations:** A general cost that cannot be directly related to any particular programme or activity of the Participating Organizations. Participating Organizations may charge 7% indirect costs based on UNSDG policy, establishing an indirect cost rate as a percentage of the programmable costs for interagency pass-through pool funds. In the current reporting period US\$ **98,736** was deducted in indirect costs by Participating Organizations. Cumulatively, indirect costs amount to US\$ **1,260,160** as of 31 December **2025**.

7. ACCOUNTABILITY AND TRANSPARENCY

In order to effectively provide fund administration services and facilitate monitoring and reporting to the UN system and its partners, the MPTF Office has developed a public website, the MPTF Office Gateway (<https://mptf.undp.org>). Refreshed daily from an internal enterprise resource planning system, the MPTF Office Gateway has become a standard setter for providing transparent and accountable trust fund administration services.

The Gateway provides financial information including: contributor commitments and deposits, approved programme budgets, transfers to and expenditures reported by Participating Organizations, interest income and other expenses. In addition, the Gateway provides an overview of the MPTF Office portfolio and extensive information on individual Funds, including their purpose, governance structure and key documents. By providing easy access to the growing number of narrative and financial reports, as well as related project documents, the Gateway collects and preserves important institutional knowledge and facilitates knowledge sharing and management among UN Organizations and their development partners, thereby contributing to UN coherence and development effectiveness.



United Nations
MPTF Office

Haiti Cholera Response Multi-Partner Trust Fund
CONSOLIDATED ANNUAL FINANCIAL REPORT 2025

Haiti Cholera Response Multi-Partner Trust Fund

Annex to Financial Report



Annex. EXPENDITURE BY PROJECT GROUPED BY TRACK

The Annex displays the net funded amounts, expenditures reported and the financial delivery rates by Track by project/ joint programme and Participating Organization

Annex: Expenditure by Project within Track

Track / Project No. and Project Title	Participating Organization	Project Status ¹	Total Approved Amount	Net Funded Amount	Total Expenditure	Delivery Rate %	
1a Prevent & Cut Transmission							
00105773	#1 HAITI CHOLERA MEDICAL RESPO	PAHO/WHO	Financially Closed	1,500,000	1,500,000	1,500,000	100.00
00105774	#3 PREVENTING & CUTTING TRANSM	UNICEF	Financially Closed	500,000	443,512	443,512	100.00
00109989	#4 Preventing and cutting	UNICEF	Financially Closed	1,000,791	993,896	993,896	100.00
00122749	CLH7 - PAHO UNICEF Strengtheni	PAHO/WHO	Project Closed	2,500,000	2,434,885	2,434,885	100.00
00122749	CLH7 - PAHO UNICEF Strengtheni	UNICEF	Project Closed	2,500,000	2,500,000	2,470,065	98.80
00141301	Emergency Cholera Response in	PAHO/WHO	On Going	550,000	550,000	-	-
1a Prevent & Cut Transmission: Total				8,550,791	8,422,293	7,842,358	93.11

Track / Project No. and Project Title	Participating Organization	Project Status	Total Approved Amount	Net Funded Amount	Total Expenditure	Delivery Rate %	
1b WASH							
00141302	Strengthening Cholera Response	UNICEF	On Going	550,000	550,000	-	-
1b WASH: Total				550,000	550,000	-	-

Track / Project No. and Project Title	Participating Organization	Project Status	Total Approved Amount	Net Funded Amount	Total Expenditure	Delivery Rate %	
2 Support to Affected							
00105932	#2 COMMUNITY ASSIST. MIRABALAIS	UNDP	Operationally Closed	1,172,876	1,172,876	1,172,516	99.97
00115476	#6 Phase 2 Community Assistanc	UNDP	Operationally Closed	1,102,040	1,102,040	984,343	89.32
00115476	#6 Phase 2 Community Assistanc	UNOPS	Operationally Closed	4,834,030	4,834,030	4,764,811	98.57
00127164	Strengthening Resilience, Heal	UNDP	On Going	5,208,277	5,208,277	3,682,538	70.71
2 Support to Affected: Total				12,317,223	12,317,223	10,604,209	86.09

Track / Project No. and Project Title	Participating Organization	Project Status ¹	Total Approved Amount	Net Funded Amount	Total Expenditure	Delivery Rate %	
Global Support							
00109990	#5 Operational and Technical	UNDPO	Project Closed	843,730	843,730	852,430	101.03
Global Support: Total				843,730	843,730	852,430	101.03

Grand Total				22,261,744	22,133,246	19,298,996	87.19
--------------------	--	--	--	-------------------	-------------------	-------------------	--------------

¹ Project closed refers to a project whose end date has passed but has not yet completed the operational closure



Contributors



Government of
Algeria



Government of
Argentina



Government of
Bahamas



Government of
Belgium



Government of
Belize



Government of
Canada



Government of
Chile



Government of
Côte d'Ivoire



Government of
Cuba



Government of
Cyprus



Government of
France



Government of
Grenada



Government of
Guyana



Government of
India



Government of
Ireland



Government of
Israel



Government of
Italy



Government of
Jamaica



Government of
Japan



Government of
Liechtenstein



Government of
Luxembourg



Government of
Mexico



Government of
Montenegro



Government of
Myanmar



United Nations
MPTF Office

Haiti Cholera Response Multi-Partner Trust Fund
CONSOLIDATED ANNUAL FINANCIAL REPORT 2025



Government of
Nepal



Government of
Netherlands



Government of
Norway



Government of
Palau



Government of
Paraguay



Government of
Philippines



Government of
Portugal



Government of
Republic of Korea



Government of
Romania



Government of
Senegal



Government of
Slovakia



Government of Sri
Lanka



Government of
Sudan



Government of the
United Kingdom
(other)



Government of
Ukraine



Government of
Uruguay



Government of
Venezuela
(Bolivarian Republic
of)



Government
Offices of Sweden



Qatar Fund for
Development



Government of The
United States



Open Society
Foundations



United Nations
MPTF Office

Haiti Cholera Response Multi-Partner Trust Fund
CONSOLIDATED ANNUAL FINANCIAL REPORT 2025

UN Participating Organizations



United Nations
Department of
Peace
Operations



unicef 
for every child





Office of the Resident Coordinator in Haiti
and UN Multi-Partner Trust Fund Office
<http://mptf.undp.org/cholera>